

SATELLAR XT 5RC

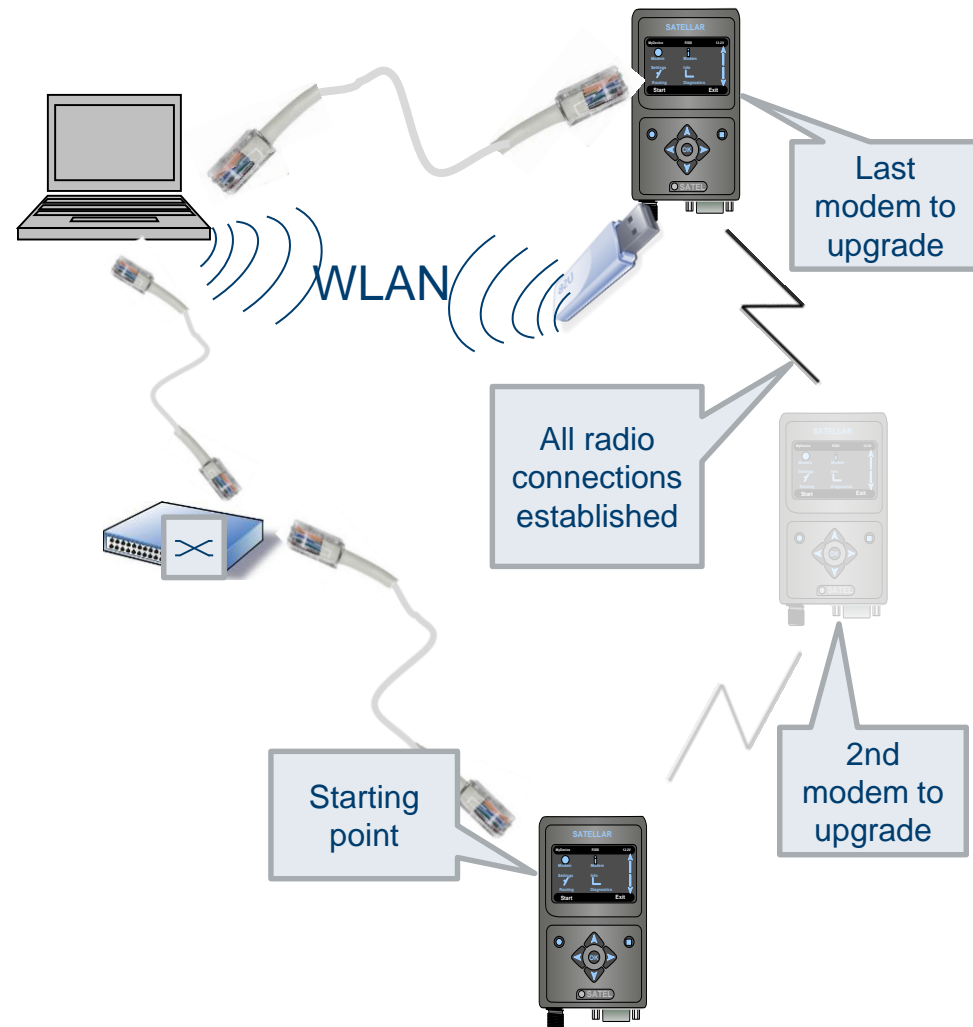
WebUI update procedure with file transfer
for CU AND RU

DISCLAIMER – IMPORTANT

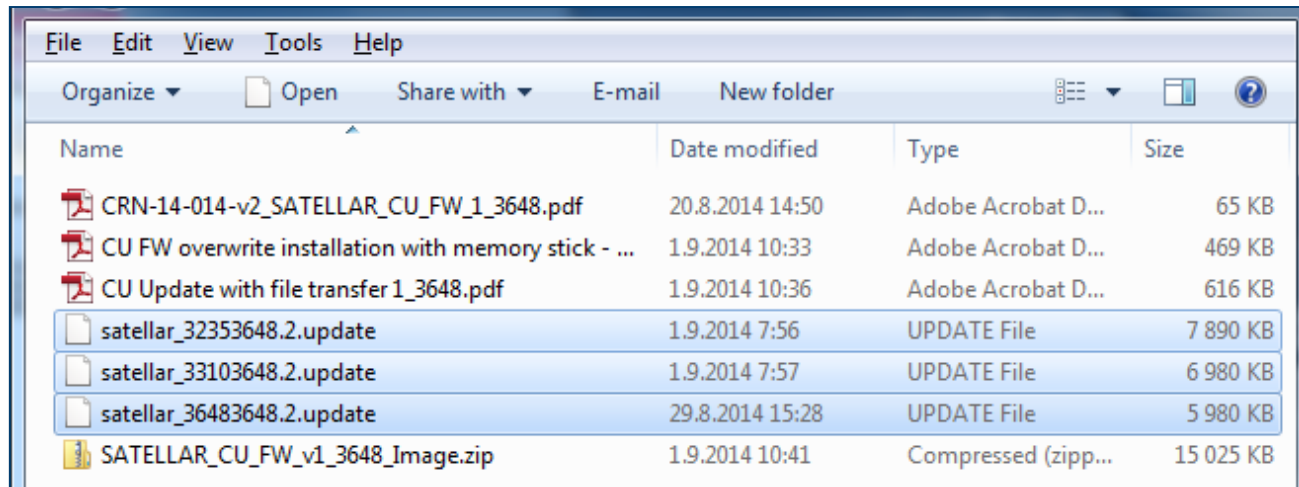
- Disable SerialIP functionality during the update
- This document uses the example of 1.3648.2
- This is to be applied with the current version
- Instructions are valid for both update files
 - CU
 - RU
- The applied file name ends with .update

- Establish IP connection from PC to SATELLAR being upgraded
 - Connect the laptop with Ethernet cable to the first SATELLAR
 - Or Use USB WLAN adapter
 - Or use already existent IP connections
- Start the upgrade from the last modem in the topology

Starting point



Files needed



Name	Date modified	Type	Size
CRN-14-014-v2_SATELLAR_CU_FW_1_3648.pdf	20.8.2014 14:50	Adobe Acrobat D...	65 KB
CU FW overwrite installation with memory stick - ...	1.9.2014 10:33	Adobe Acrobat D...	469 KB
CU Update with file transfer 1_3648.pdf	1.9.2014 10:36	Adobe Acrobat D...	616 KB
satellar_32353648.2.update	1.9.2014 7:56	UPDATE File	7 890 KB
satellar_33103648.2.update	1.9.2014 7:57	UPDATE File	6 980 KB
satellar_36483648.2.update	29.8.2014 15:28	UPDATE File	5 980 KB
SATELLAR_CU_FW_v1_3648_Image.zip	1.9.2014 10:41	Compressed (zipp...	15 025 KB

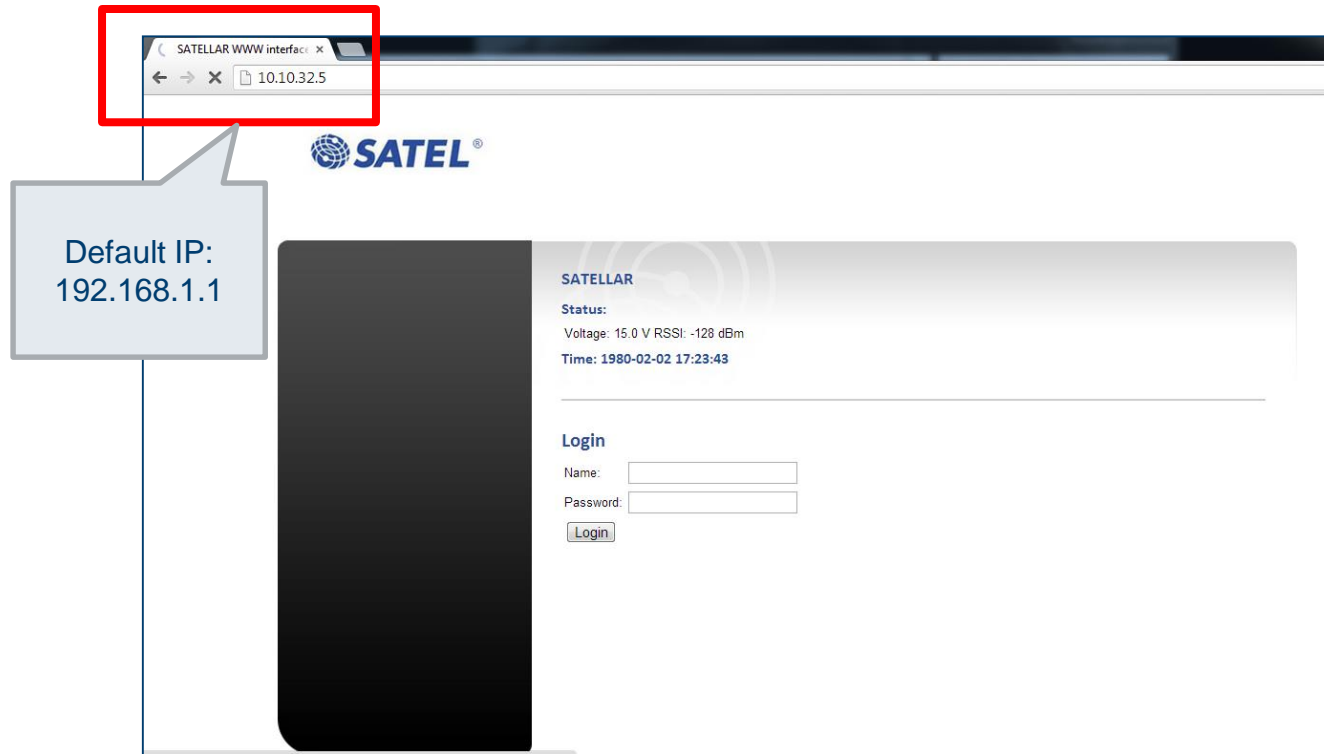
Select the update file according to current version

- xxxxyyyy.update
 - From xxxx to yyyy

For example:

- Select satellar_39894403.update
 - CU update from 1.3648 to 1.4403
- Select satellar_rmu-w.x.y.z.update
 - for Radio Unit firmware

Connect with browser to the SATELLAR



- Connect to furthest SATELLAR which is not upgraded yet
- Chrome browser recommended (shows progress percentage).
- Enter the IP address to URI field of the browser
- Login: admin / Satel456

CU/RU UPDATE

Firmware Upgrading menu

The screenshot displays the SATELLAR web interface. At the top, a navigation bar contains several tabs: Modem Settings, Modem Info, Routing, Diagnostics, **Firmware Updater** (highlighted with a red box), NMS Import, Logs, Administration, and Logout. On the left side, a dark sidebar lists various configuration categories: Network Protocol Mode, Radio, Serial Connector Configuration, Data Port Settings, Serial Data Flow Control, Packet Mode Radio Access Control, General, Services, Commands, Remote Devices, SNMP, and Time Control. Below these are links for 'Reload NMS values (NOTE)', 'Reload', 'Reboot CU', and 'Reboot'. The main content area is titled 'SATELLAR' and shows the 'Status' section with 'Voltage: 15.1 V RSSI: -63 dBm' and 'Time: 1980-02-25 04:19:19'. Below this, there are input fields for 'NetID' (containing 'Satel NG'), 'Address (RMAC)' (containing '5'), and a 'Protocol Mode' dropdown menu (set to 'Packet Routing'). An 'Apply Changes' button is located below these fields. A message at the bottom of the main area states 'No uncommitted changes'. At the very bottom of the page, contact information for SATEL Oy is provided.

Modem Settings | Modem Info | Routing | Diagnostics | **Firmware Updater** | NMS Import | Logs | Administration | Logout

Network Protocol Mode
Radio
Serial Connector Configuration
Data Port Settings
Serial Data Flow Control
Packet Mode Radio Access Control
General
Services
Commands
Remote Devices
SNMP
Time Control

Reload NMS values (NOTE)
Reload
Reboot CU
Reboot

SATELLAR
Status:
Voltage: 15.1 V RSSI: -63 dBm
Time: 1980-02-25 04:19:19

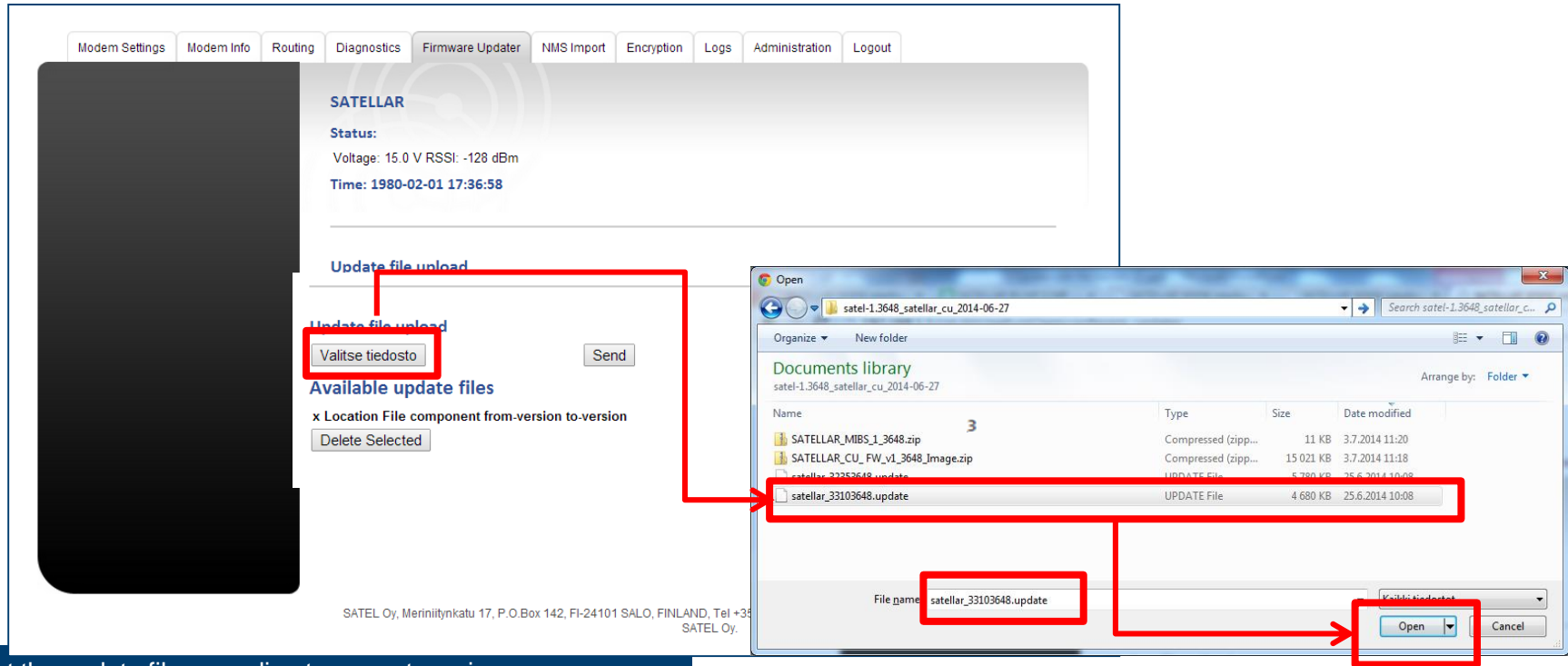
NetID:
Address (RMAC):
Protocol Mode:
Apply Changes

No uncommitted changes

SATEL Oy, Meriniitynkatu 17, P.O.Box 142, FI-24101 SALO, FINLAND, Tel +358 2 777 7800, Fax +358 2 777 7810, E-mail info@satel.com
SATEL Oy.

- Select Firmware Updater menu tab

Select firmware package



Select the update file according to current version

- xxxxyyyy.update
 - From xxxx to yyyy

For example:

- Select satellar_39894403.update
 - CU update from 1.3648 to 1.4403
- Select satellar_rmu-w.x.y.z.update
 - for Radio Unit firmware
- Select satellar_xxxx3648.2.update

Confirm by selecting **Open**

Send the firmware package

The screenshot shows the SATELLAR web interface with the following elements:

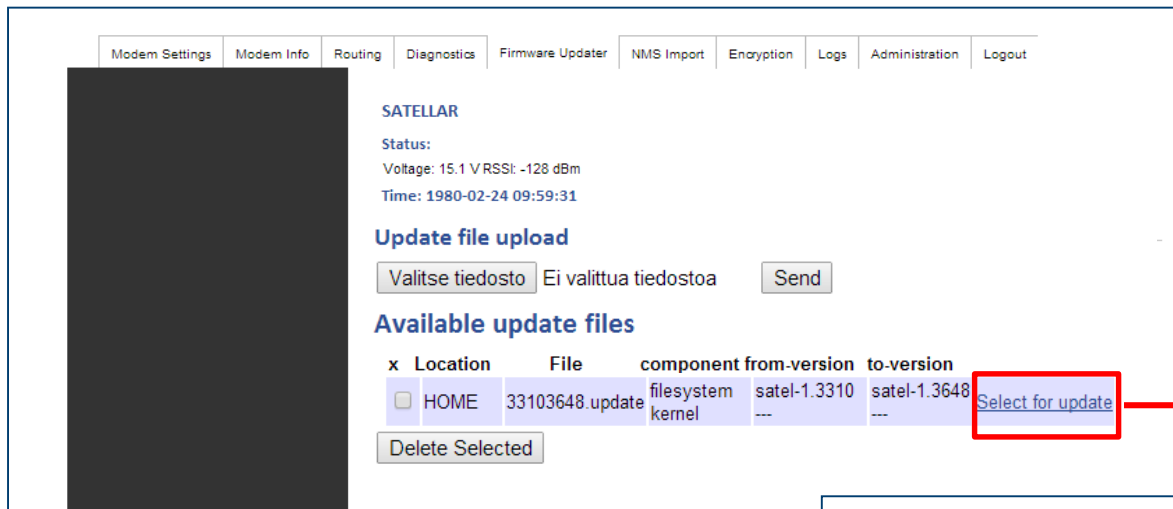
- Navigation tabs: Modem Settings, Modem Info, Routing, Diagnostics, **Firmware Updater**, NMS Import, Encryption, Logs, Administration, Logout.
- Section: **SATELLAR**
- Status information: Voltage: 15.0 V RSSI: -128 dBm, Time: 1980-02-01 17:36:58.
- Update file upload section: Valitse tiedosto satellar_3...648.update **Send** (highlighted with a red box).
- Available update files section: x Location File component from-version to-version, Delete Selected.

A red arrow points from the **Send** button to a progress bar in a Chrome browser window. The progress bar is labeled "Ladataan (3 %)...". A speech bubble points to the progress bar with the text: "Chrome: Monitor sending process (3% in this case)".

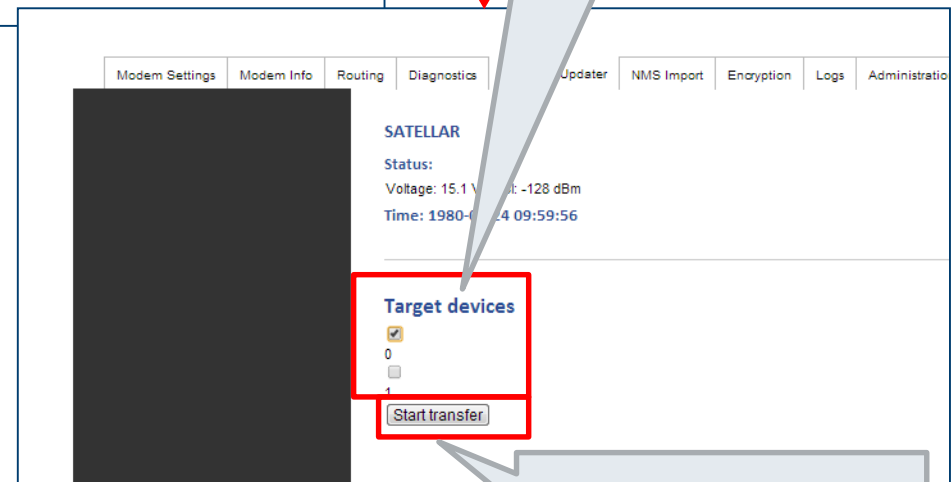
SATEL Oy, Meriniläntäkatu 17, P.O.Box 142, FI-24101 SALO, FINLAND, SATEL

- If update is done over radio interface this step may take more than **1 hour per radio hop!**
- If update is done to local modem (not over radio) this step takes **5 min!**

Start the FW update



Select device 0
for local device
or
device ID for
remote update



Select to start the actual
upgrade

- In case of transmission problems or timeouts or browser reporting error, repeat previous slide.
- When sending finished you will see the firmware listed.
- Select "Select for update"
- And select Device 0 to start the actual upgrade process.

Monitor upgrade process

SATELLAR

Status:
Voltage: 15.3 V RSSI: -128 dBm
Time: 1980-02-24 10:00:39

Transfer is starting... please wait

SATELLAR

Status:
Voltage: 15.1 V RSSI: -127 dBm
Time: 1980-02-24 10:01:21

0
23 of 42 blocks sent
[Cancel transfer](#) [Refresh](#)

SATELLAR

Status:
Voltage: 15.1 V RSSI: -128 dBm
Time: 1980-02-24 10:02:31

0
Updated local device, needs to be reboot to proceed with update.
Transfer completed.
[Clear the list](#)

To proceed with update, CU Needs to be rebooted now.
Update process takes about 5-10 minutes.

Reboot

- Monitor the process by viewing number of blocks sent
- When "Transfer completed" is visible, select "Reboot"

Wait until update finished during reboot

SATELLAR

Status:

Voltage: 15.3 V RSSI: -128 dBm

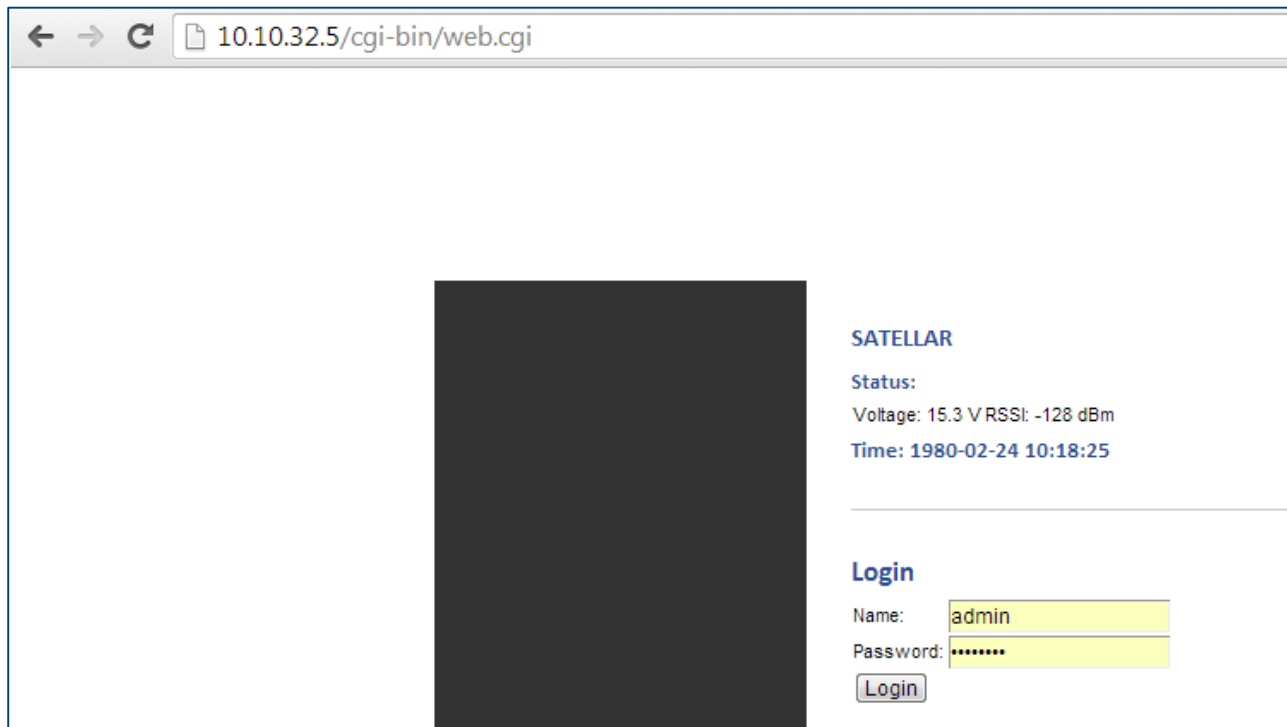
Time: 1980-02-24 10:04:00

**Do not press browser
"refresh" button or F5 key!!!
(or the modem will reboot)**

Device is rebooting and doing the update. This takes several minutes. Page reloads after 20 minutes. Reload of page can be tried sooner if noticed that device up (e.g. stat-led is not blinking anymore or GUI is on). **IMPORTANT!** Device must be on at least 10 minutes after the boot up process is complete (stat-led is not blinking anymore or GUI is on). This is a safety margin to make sure all application are working properly after update. In case the device is rebooted sooner (e.g. power switched off and on), it will do revert to previous version.

- Wait until the STAT-led starts blinking and the blinking stops
- Or at least 10 minutes
- Then continue to next slide

Login back to WebUI



← → ↻ 10.10.32.5/cgi-bin/web.cgi

SATELLAR

Status:
Voltage: 15.3 V RSSI: -128 dBm
Time: 1980-02-24 10:18:25

Login

Name:

Password:

- Enter the IP address of the modem again to the Web Browser
- Login with admin / Satel456